

YasXIO board
Master

SW 1

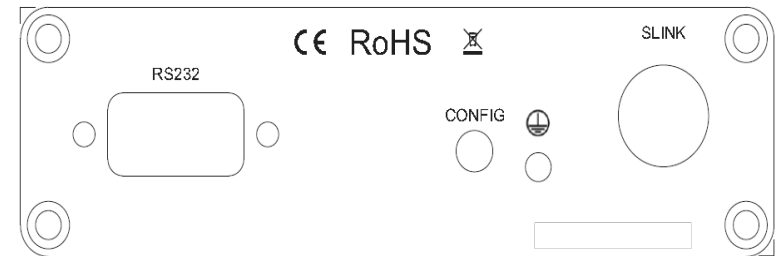
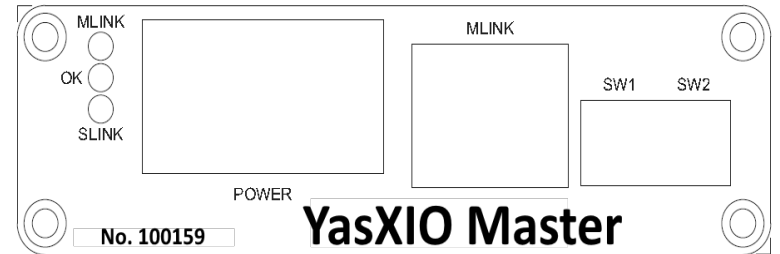
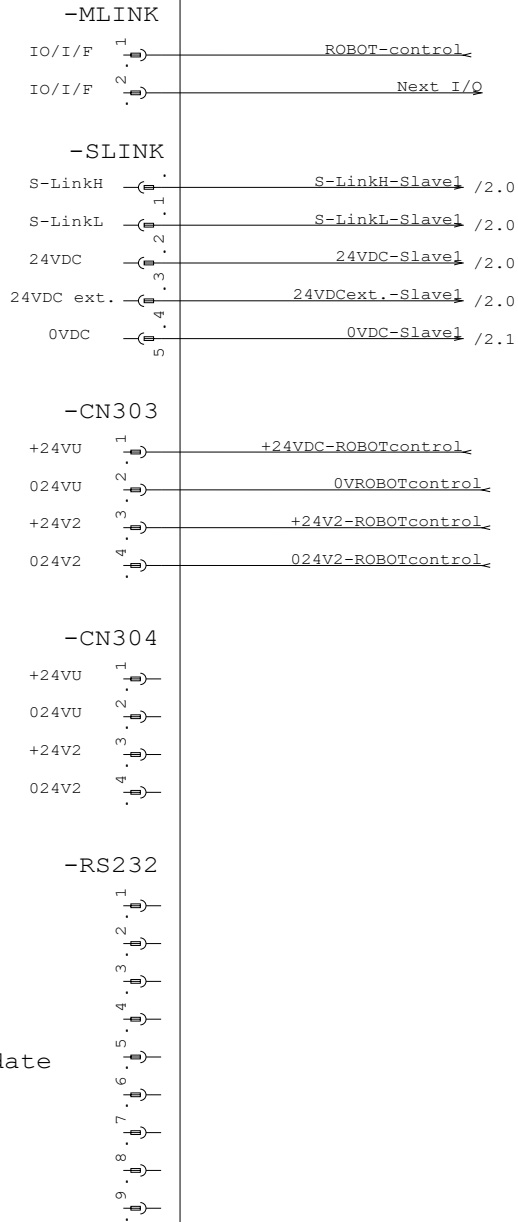
SW 2



SW 1 = 2
(Address in robot controller)

SW 2 = 8
(Slave ADR 0 + 8 for end resistor)

RS 232
Just system update



		Datum	31.08.21	Meier EDV Beratung Schwarzhölzlstr. 22R 85757 Karlsfeld info@meieredvberatung.de		YasXIO		Anlage	=
		Bearb.		Ers. f.		Ers. d.		Ort	+
		Gepr.						Zeichnungsnummer	
Zustand	Änderung	Datum	Name	Ers. f.		Ers. d.		von 2	

YasXIO board
Slave 1

ADR Slave 1 = 8
(Slave ADR 0 + 8 for end resistor)

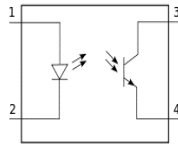


-SLINK-

S-LinkH
S-LinkL
24VDC
24VDC ext.
0VDC

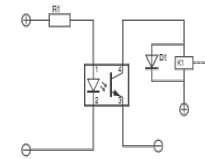
1
2
3
4
5

/1.4 S-LinkH-Slave1
/1.4 S-LinkL-Slave1
/1.4 24VDC-Slave1
/1.4 24VDCext.-Slave1
/1.4 0VDC-Slave1



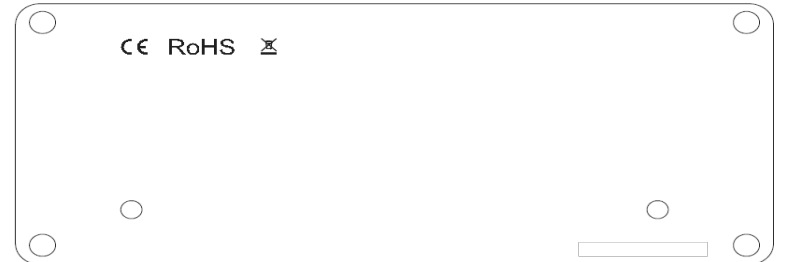
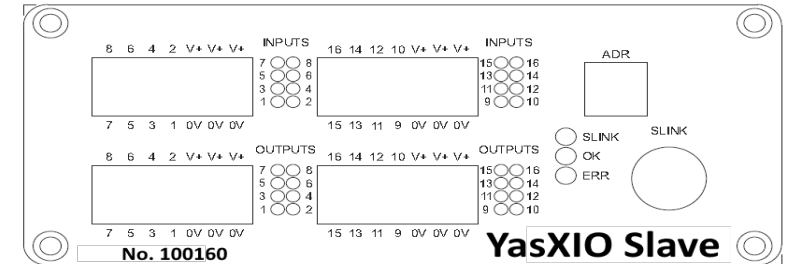
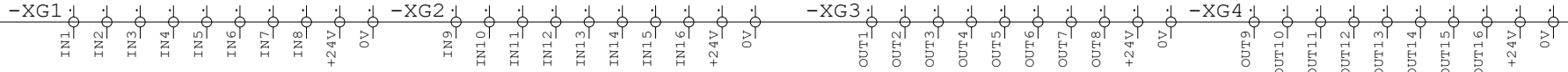
typical input character voltage for on status
13-30 VDC

16 Input



Summary 16 output current max 4 A
max/current/channel 600 mA
proof short cicuit/channel

16 Output



		Datum	31.08.21	Meier EDV Beratung Schwarzhölzlstr. 22R 85757 Karlsfeld info@meieredvberatung.de		 YasXer.de	YasXIO		Anlage	=
		Bearb.							Ort	+
		Gep.							Zeichnungsnummer	
Zustand	Änderung	Datum	Name	Norm	Ers. f.	Ers. d.			von 2	