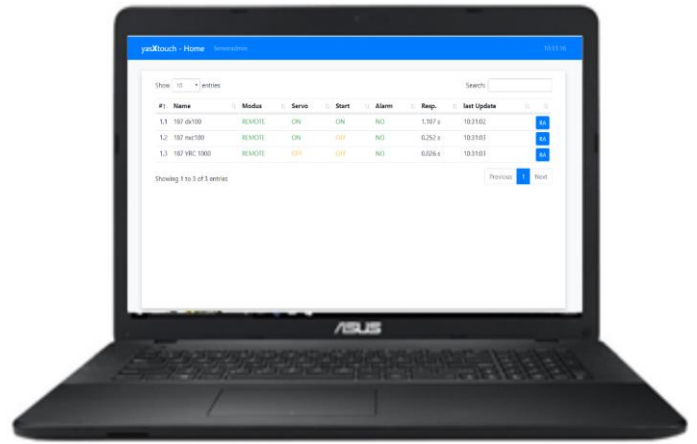
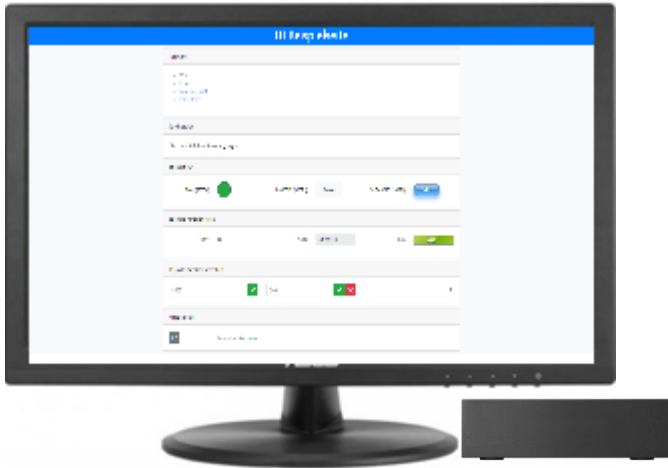


YasXTouch

YasXfer Remote Maintenance
StatusMail Plugin

Übersicht lokal / local Overview



An der Roboterzelle HTML Benutzer Bildschirm
In Front of the System HTML User Screen

Extern / Intern Remote Service



Yaskawa Controller



sichere Verbindung
safety connection

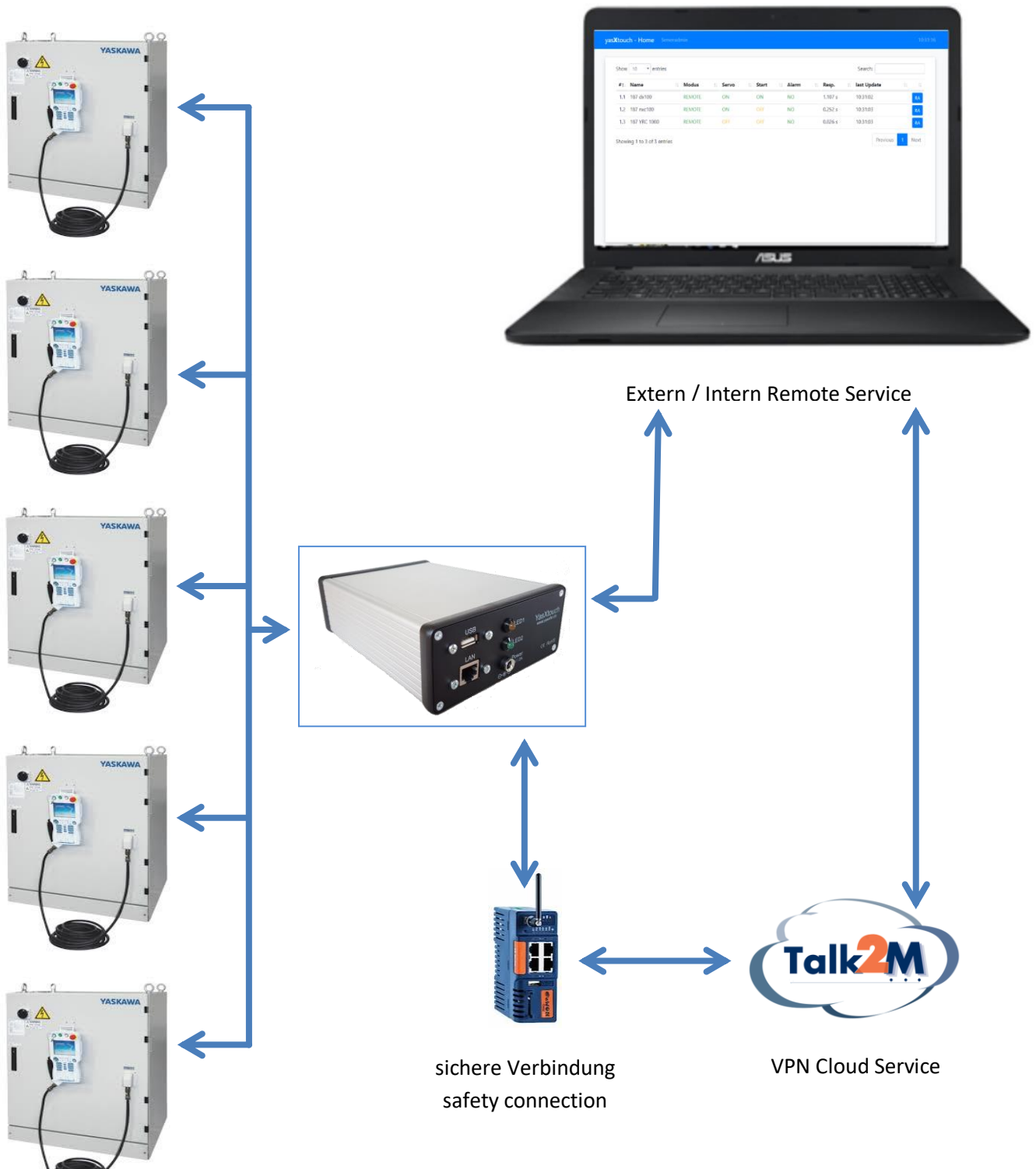


VPN Cloud Service

YasXTouch

YasXfer Remote Maintenance
StatusMail Plugin

Übersicht Robot Admin/Overview Robot Admin



YasXTouch

YasXfer Remote Maintenance
StatusMail Plugin

Inhaltsverzeichnis

Inhalt

Inhaltsverzeichnis	3
Deutsch	4
1. Funktionsweise	4
2. Voraussetzung	4
3. Statusmail Startseite	4
3.1 Lizenz	4
3.2 E-Mail Einstellungen.....	4
3.3 Stats	5
English	6
21. Functionality	6
22. Actual Requirements.....	6
23. Statusmail Homepage	6
23.1 Licence	6
23.2 Mailsettings.....	6
23.3 Stats	7

YasXTouch

YasXfer Remote Maintenance StatusMail Plugin

Deutsch

1. Funktionsweise

Über die Plugin Funktion können anwenderspezifische Zusatzfunktionen installiert werden. In diesem Fall können Email Benachrichtigungen eingerichtet werden.

2. Voraussetzung

- YasXTouch Unit komplett konfiguriert mit eingetragenen Controllern
- Web Browser
- Das Plugin muss zusätzlich als Update nachgeladen werden. Ab Softwarestand 1.37 möglich.
- Statusmail benötigt eine eigene Lizenz

3. Statusmail Startseite

Aufruf des Plugins erfolgt über den neuen Eintrag in der Taskleiste, [yasXTouch - Home](#) [Serveradmin](#) [IP](#) [Copies](#) [Customing](#) [StatusMail](#), Statusmail

Please sign in
StatusMail Password
Password
Sign in

Password Standard, kann unter User geändert werden

3.1 Lizenz

Die erforderliche Plugin Lizenz muss zuerst eingegeben werden.

License
License Key 65491156
Serial Number 1149106989
Status is valid
check

3.2 E-Mail Einstellungen

Im Menüpunkt Mailsetting muss der Emailserver für den Versand eingetragen werden. Hier als Beispiel GMX.

Mailserver Settings (SMTP)
server mail.gmx.net
port 587 25, 465 or 587
security STARTTLS (explicit TLS on port 587)
authentication true
username yasxfer@gmx.de
password *****
from address yasxfer@gmx.de
from name Yasxtouch Statusmail
test save
After change the Settings: [Reboot](#) the Server.

Wichtig, ein Reboot immer nach einer Veränderung dieser Einstellungen nötig

3.3 Stats

Unter Stats werden die E-Mail Benachrichtigungen eingerichtet und angezeigt.

The screenshot shows the 'Send Status to eMail' interface. At the top, there is a navigation bar with 'yasxtouch - StatusMail', 'Home', 'Stats', 'Mailsettings', 'License', 'User', and a 'Logout' button. Below the navigation bar, the title 'Send Status to eMail' is centered. On the left, there is a 'Show 10 entries' dropdown. In the center, there are buttons for 'Copy', 'Excel', 'PDF', and 'Add'. On the right, there is a search box labeled 'Search:'. Below these elements is a table with the following columns: #, ID, Name, Condition, Status, Timer, status since, and mail send at. The table contains one entry with ID 1, Name 'VRC1000 R1', Condition 'is', Status 'Error occurring', and Timer '10'. Below the table, it says 'Showing 1 to 1 of 1 entries'. On the right side of the table, there are 'Previous', '1', and 'Next' buttons.

The screenshot shows the 'Add' dialog box. It has a close button (X) in the top right corner. The 'Controller' is set to '1: VRC1000 R1'. The 'Status' is set to 'is' (with radio buttons for 'is' and 'is not'). A dropdown menu is open, showing options: 'offline', 'turning', 'In-guard safe operation', 'Teach', 'Play', 'Command remote', 'In hold status', 'Alarming', 'Error occurring', and 'Servo ON'. The 'Timer' is set to '10'. The 'To' field is empty. The 'Subject' is 'Statusmessage from YasXTouch'. The 'Body' field contains a template: 'The condition was met. Controller id: [CONTROLLER_ID] Controller name: [CONTROLLER_NAME] Condition: [CONDITION] Timer: [TIMER]'. At the bottom, there are 'Close' and 'Add' buttons.

Der Body Bereich kann mit eigenem Text und Formatierung angepasst werden

YasXTouch

YasXfer Remote Maintenance StatusMail Plugin

English

21. Functionality

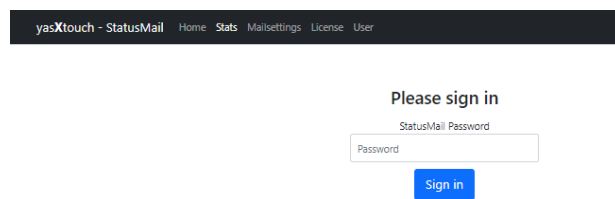
User-specific additional functions can be installed via the plug-in function. In this case, email notifications can be set up.

22. Actual Requirements

- YasXTouch Unit completely configured with registered controllers
- Web browser
- The plug-in must also be downloaded as an update. Possible from software version 1.37.
- Statusmail requires its own license

23. Statusmail Homepage

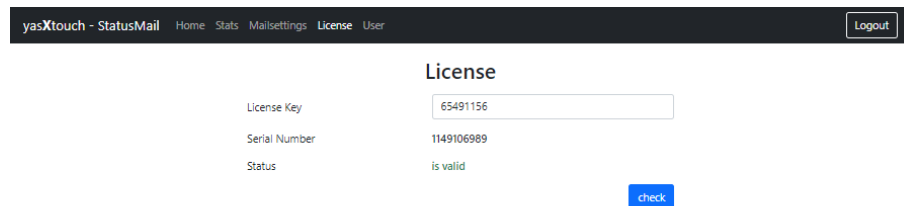
The plug-in is called via the new entry in the task bar, [yasXTouch - Home](#) [Serveradmin](#) [KPI](#) [Cognit](#) [Customing](#) [Statusmail](#), Statusmail



Password Standard, can be changed in User Menu

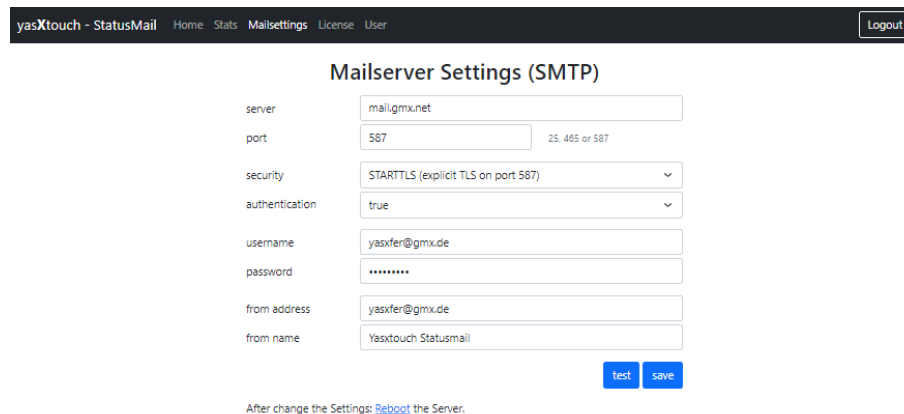
23.1 Licence

The required plug-in license must be entered first.



23.2 Mailsettings

The email server for sending must be entered in the Mailsetting menu item. Here as an example GMX.



It is important to reboot after any changes of this settings

23.3 Stats

The e-mail notifications are set up and displayed under Stats.

yasxtouch - StatusMail Home Stats Mailsettings License User Logout

Send Status to eMail

Show entries Search:

[Copy](#) [Excel](#) [PDF](#) [Add](#)

#	ID	Name	Condition	Status	Timer	status since	mail send at
1	1	VRC1000 R1	is	Error occurring	10		

Showing 1 to 1 of 1 entries [Previous](#) [1](#) [Next](#)

Add

Controller: 1:VRC1000 R1

Status: is is not offline

Timer: running

To:

Subject:

Body: In-guard safe operation

Teach

Play

Command remote

In hold status

Alarming

Error occurring

Servo ON

[Close](#) [Add](#)

The Body Text can be modified with own formulation and text